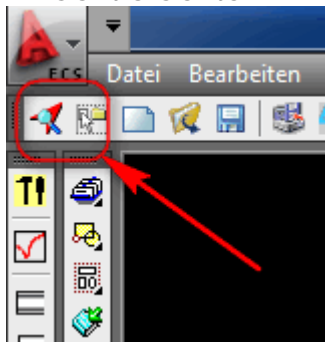
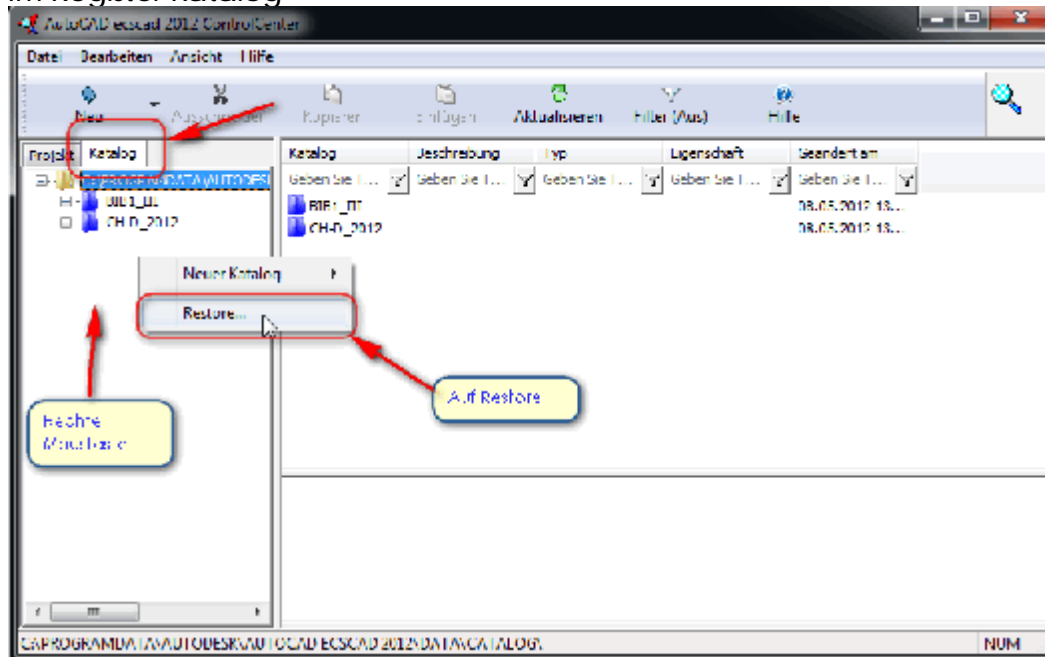


## Installationshinweis Feller KNX Symbole für AutoCAD ecscad 2012 / 2013

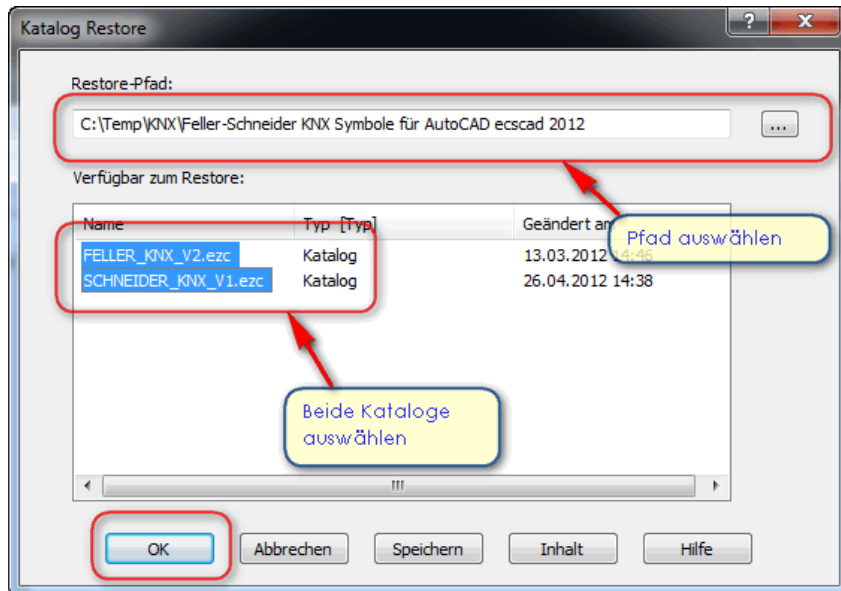
Im ControlCenter



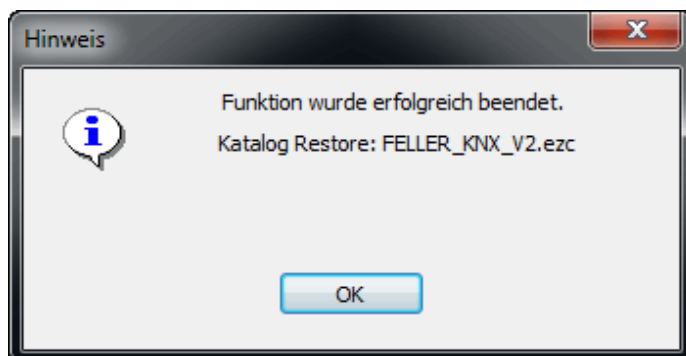
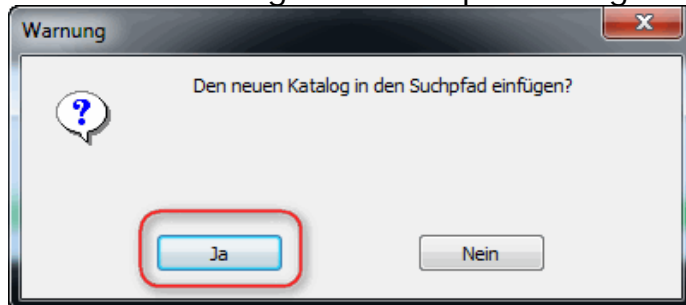
Im Register Katalog

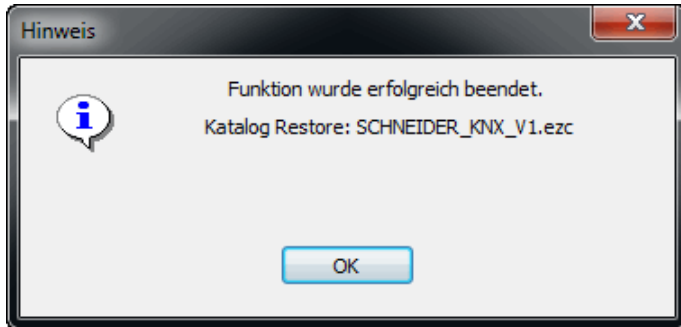


Beide Kataloge auswählen und auf OK.

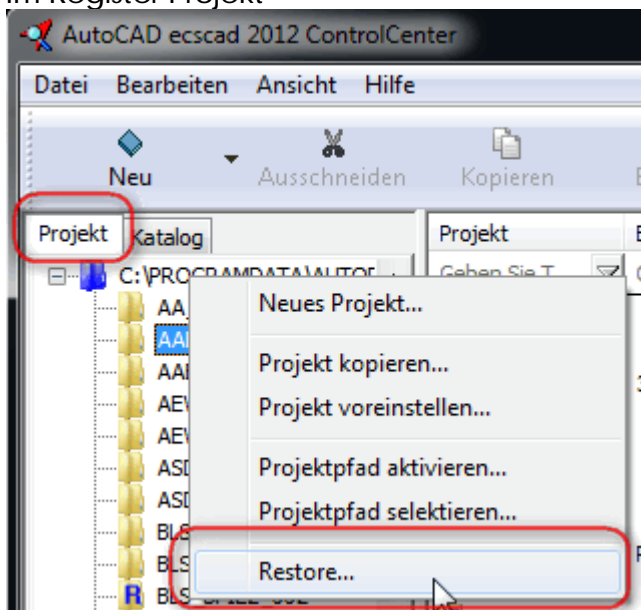


Den neuen Katalog in den Suchpfad einfügen auf Ja.

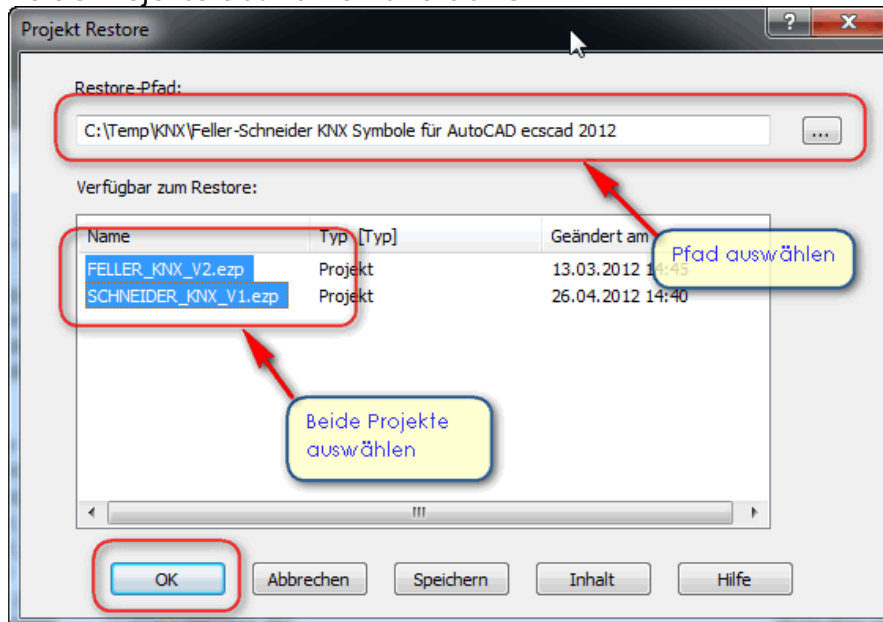




Dasselbe das Einlesen der 2 Projekte.  
Im Register Projekt



Beide Projekte auswählen und auf OK.



Somit sind die Stammdaten Feller KNX in Ihrem AutoCAD ecscad eingelesen